

packard bell

43"

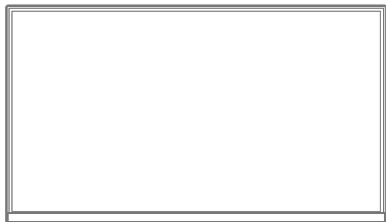
Total Display Area

airFrame[®]
Dual Monitor Workstation



WS21500BK
Quick Start Guide

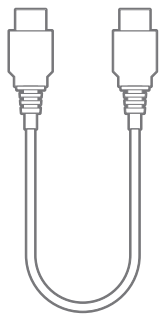
In the Box



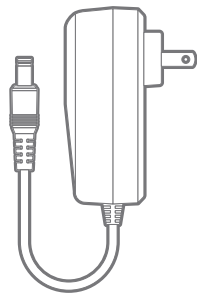
21.5" Monitor (x2)



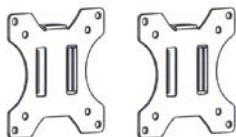
Quick Start Guide



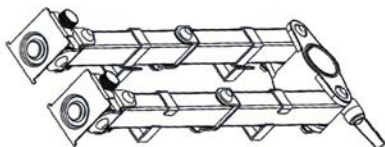
HDMI Cable (x2)



Power Adapter (x2)



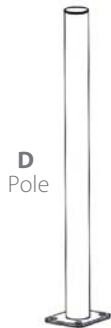
A
VESA Plates (x2)



B
VESA Arms



C
Glass Base



D
Pole



E
Wire Clips (x4)



F
Wire Clip
With Tool Holder



G
3mm Hex Wrench



H
Phillips Screwdriver



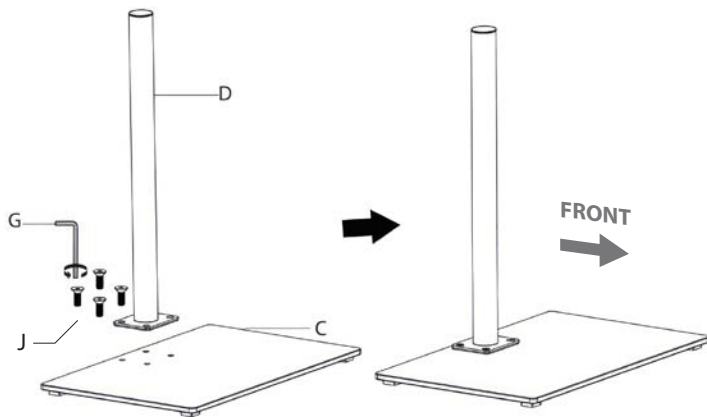
I
Phillips Head Screws (x8)



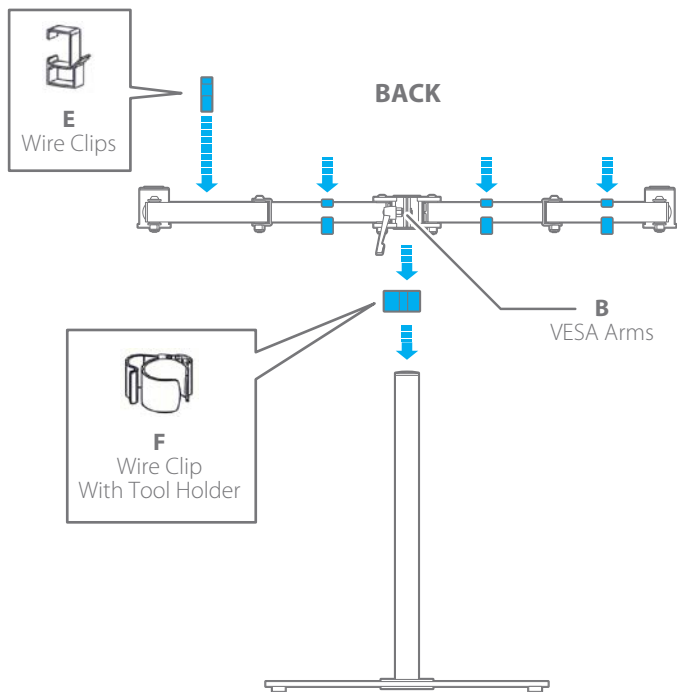
J
Hex Flat Head Screws (x4)

Assembling the VESA Stand

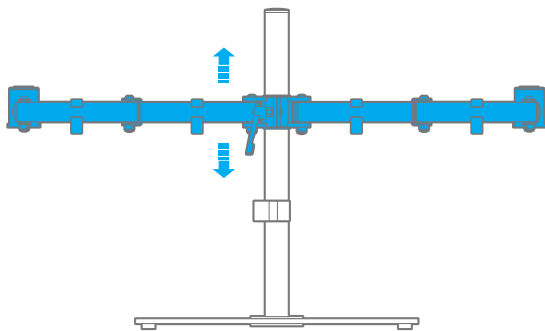
1. Assembling the Base Stand



2. Mounting the VESA Arms to the Base Stand

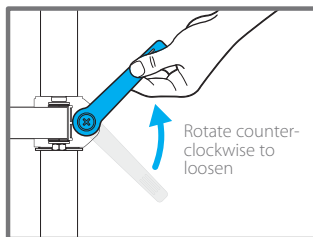
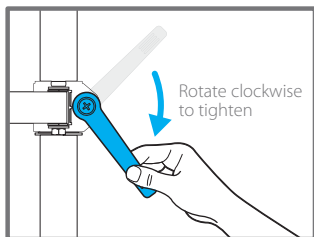


3. Tightening or Loosening the VESA Arms



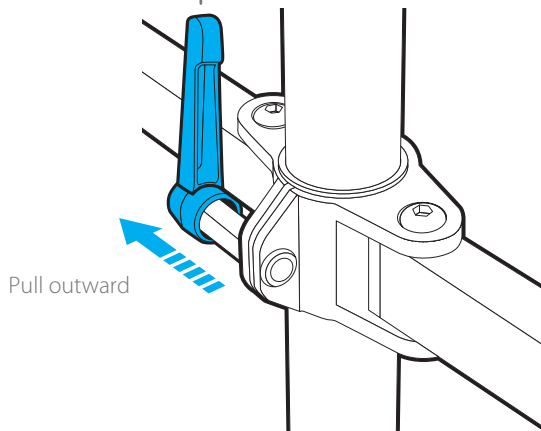
BACK

Grab the lever and rotate clockwise to tighten or counter-clockwise to loosen the VESA arms.



Pull the lever outward, and while holding it in the outward position, rotate it clockwise or counter-clockwise to continue loosening or tightening the VESA arms.

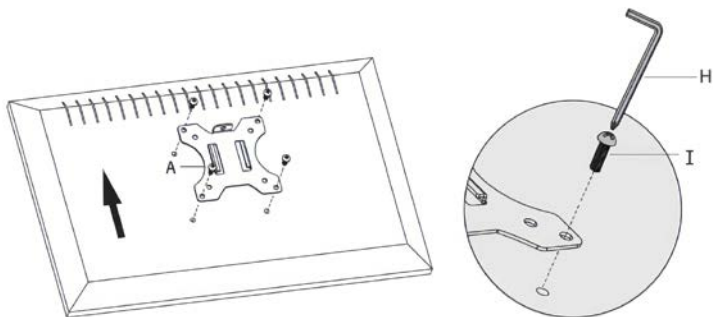
Where the lever rotation
reaches its maximum limit



NOTE: Lock the VESA arms at the desired viewing height.

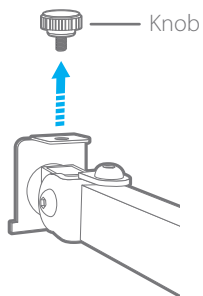
4. Attaching the VESA Plates to the Monitors

Attach the VESA plates to the monitors as shown below.

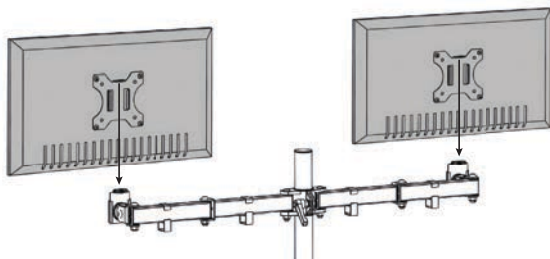


5. Mounting the Monitors to the VESA Arms

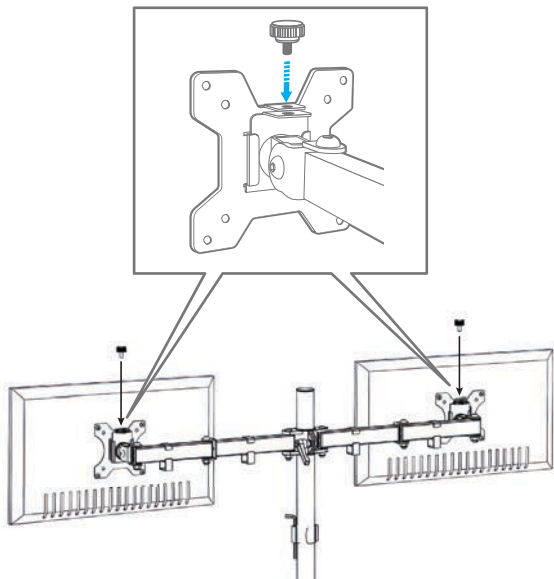
- i) Unscrew the knobs from the VESA arms.



- ii) Slide the monitors into the VESA arms.

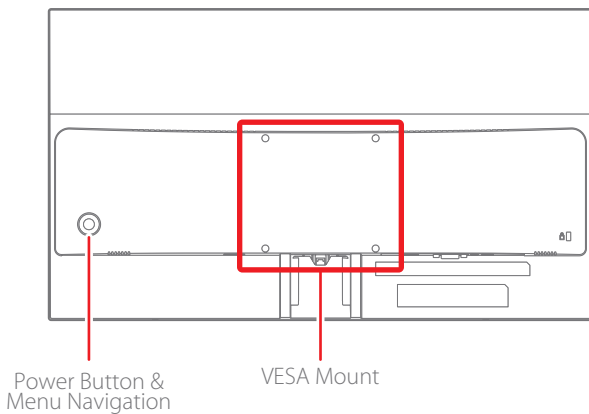


iii) Screw the knobs back into the VESA arms.

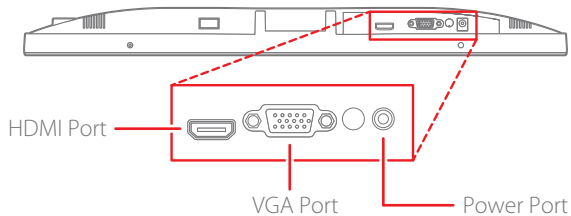


NOTE: To adjust the height of the VESA arms after assembly, please remove the monitors from the VESA arms and follow the instructions mentioned on pages 5-6.

Monitor (Back view)

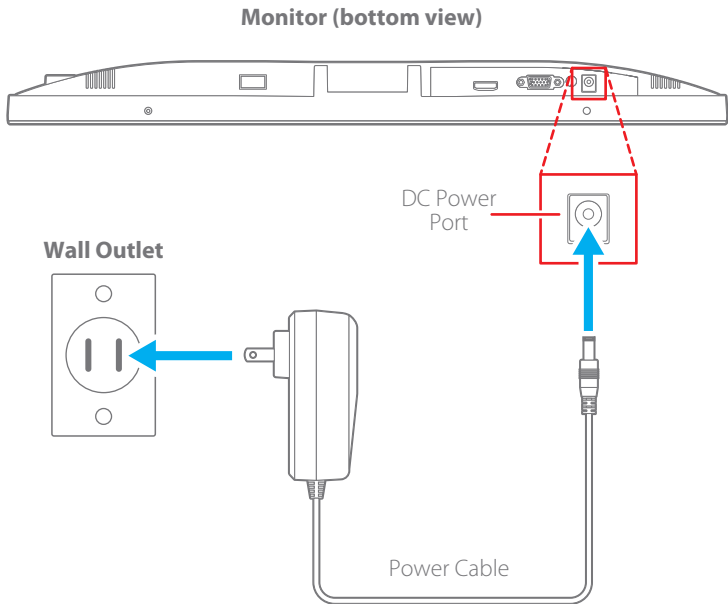


Monitor (bottom view)

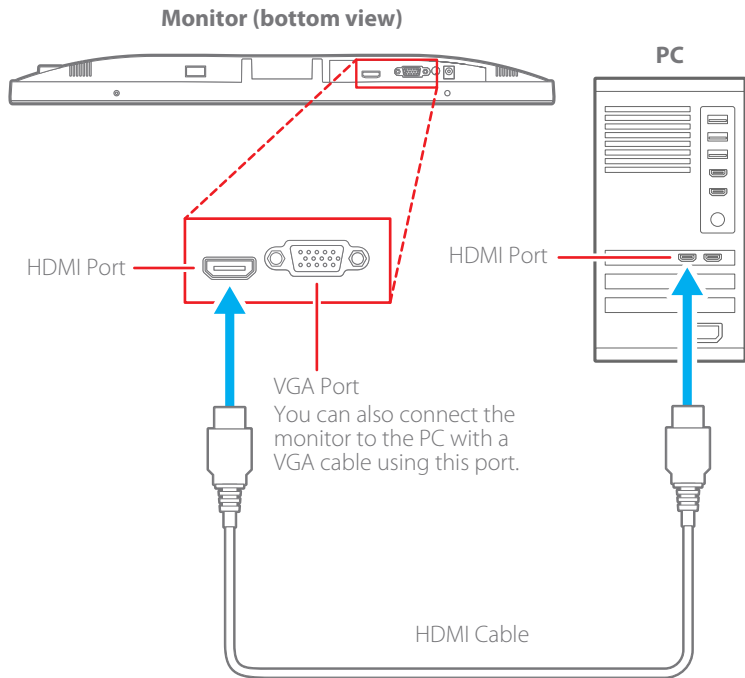


Connecting the Power Cable

Insert the included power cable into the monitor's DC power port as shown below and connect the other end to a wall outlet.



Connecting the HDMI Cable




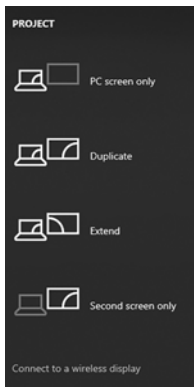
Setting Up on Windows/Mac

WINDOWS

To get your PC to recognize multiple monitors, make sure your cables are connected properly to the new monitors, and follow these steps:

1. Select **Start > Settings > System > Display**.
2. Your PC should automatically detect your monitors and show your desktop. If you don't see the monitors, select **"Detect"**.
3. In the **"Multiple displays"** section, select an option from the list to determine how your desktop will display across your screens.
4. Once you've selected what you see on your displays, select **"Keep changes"**.

NOTE: To change the screen mode, press and hold the  and **P** keys to display the **"PROJECT"** Menu shown below. Select an option that is suitable for your screen mode.



PC screen only

See things on one display only.

Duplicate

See the same thing on all your displays.

Extend (Recommended)

See your desktop across multiple screens. When you have displays extended, you can move items between the two screens.

Second screen only

See everything on the second display only.

MAC

When you connect one or more external displays to your Mac, you can choose what appears on each display. To do so, follow below steps:

On your Mac, choose **Apple menu**  **> System Settings**, then click **Displays**  in the sidebar (You may need to scroll down).

Click the name of your display on the right, click the **“Use as”** pop-up menu, then choose an option.

NOTE: If you are using a Mac laptop or iMac, you must have an external display connected to your Mac to see these options. If you are using a device with no built-in display, such as a Mac mini or Mac Studio, you must have more than one display connected to see these options.

FCC Information

This device complies with Part 15 of the FCC Rules. Operation is subject to the following two conditions: (1) This device may not cause harmful interference, (2) This device must accept any interference received, including interference that may cause undesired operation.

CAUTION

Changes or Modifications not expressly approved by the party responsible could void the user's authority to operate this device. This equipment has been tested and found to comply with the limits for a Class B digital device, pursuant to Part 15 of the FCC Rules. These limits are designed to provide reasonable protection against harmful interference in a residential installation. This equipment generates, uses and can radiate radio frequency energy and, if not installed and used in accordance with the instructions, may cause harmful interference to radio communications. However, there is no guarantee that interference will not occur in a particular installation. If this equipment does cause harmful interference to radio or television reception, which can be determined by turning the equipment off and on, the user is encouraged to try to correct the interference by one or more of the following measures:

- Reorient or relocate the receiving antenna.
- Increase the separation between the equipment and receiver.
- Connect the equipment into an outlet on a circuit different from that to which the receiver is connected.
- Consult the dealer or an experienced radio/TV technician for help.

This equipment complies with the FCC RF radiation exposure limits set forth for an uncontrolled environment. This equipment should be installed and operated with a minimum distance of 20 centimeters between the radiator and your body.

IC Statement

CAN ICES-003(B) / NMB-003(B)

This device contains license-exempt transmitter(s)/receiver(s) that comply with Innovation, Science and Economic Development Canada's license-exempt RSS(s). Operation is subject to the following two conditions:

1. This device may not cause interference.
2. This device must accept any interference, including interference that may cause undesired operation of the device.

Limited Warranty

1-Year Limited Warranty

Territory: United States

LIMITED WARRANTY TO ORIGINAL CONSUMER

This product as supplied and distributed new by an authorized retailer is warranted by Southern Telecom, Inc. to the original consumer purchaser against defects in materials and workmanship ("Warranty") as follows:

To obtain warranty service:

- Visit our customer support portal: **www.customersupport123.com** and select "Support".
- Select the brand, fill out the corresponding form (exchanges require dated proof of purchase from an authorized retailer) then submit your request.

Your product will be repaired or replaced, at our option, for the same or similar model of equal value if examination by the service center determines this product is defective. Products received damaged as a result of shipping will require you to file a claim with the carrier.

Warranty service not provided

This warranty does not cover damage resulting from accident, misuse, abuse, improper installation or operation, lack of reasonable care, unauthorized modification including software modifications such as the installation of custom firmware. This warranty is voided in the event any unauthorized person opens, alters or repairs this product. All products being returned to the authorized service center for repair must be suitably packaged.

NO WARRANTIES, WHETHER EXPRESS OR IMPLIED, INCLUDING, BUT NOT LIMITED TO, ANY IMPLIED WARRANTIES OF MERCHANTABILITY OR FITNESS FOR A PARTICULAR PURPOSE, OTHER THAN THOSE EXPRESSLY DESCRIBED ABOVE SHALL APPLY. DISTRIBUTOR FURTHER DISCLAIMS ALL WARRANTIES AFTER THE EXPRESS WARRANTY PERIOD STATED ABOVE. NO OTHER EXPRESS WARRANTY OR GUARANTY GIVEN BY ANY

PERSON, FIRM OR ENTITY WITH RESPECT TO THE PRODUCT SHALL BE BINDING ON DISTRIBUTOR. REPAIR, REPLACEMENT, OR REFUND OF THE ORIGINAL PURCHASE PRICE - AT DISTRIBUTOR'S SOLE DISCRETION - ARE THE EXCLUSIVE REMEDIES OF THE CONSUMER. IN NO EVENT WILL DISTRIBUTOR OR ITS MANUFACTURERS BE LIABLE FOR ANY INCIDENTAL, DIRECT, INDIRECT, SPECIAL, PUNITIVE OR CONSEQUENTIAL DAMAGES (SUCH AS, BUT NOT LIMITED TO, DAMAGES FOR LOSS OF PROFITS, BUSINESS, SAVINGS, DATA OR RECORDS) CAUSED BY THE USE, MISUSE OR INABILITY TO USE THE PRODUCT. EXCEPT AS STATED HEREIN, NO OTHER WARRANTIES SHALL APPLY. NOTWITHSTANDING THE FOREGOING, CONSUMER'S RECOVERY AGAINST DISTRIBUTOR SHALL NOT EXCEED THE PURCHASE PRICE OF THE PRODUCT SOLD BY DISTRIBUTOR. THIS WARRANTY SHALL NOT EXTEND TO ANYONE OTHER THAN THE ORIGINAL CONSUMER WHO PURCHASED THE PRODUCT AND IS NOT TRANSFERABLE.

Some countries, states or provinces do not allow the exclusion or limitation of incidental or consequential damages or allow limitations on warranties, so limitation or exclusions may not apply to you. This warranty gives you specific legal rights, and you may have other rights that vary from state to state or province to province. Contact your authorized retailer to determine if another warranty applies.

packard bell